



ST MARY THE VIRGIN CW PRIMARY SCHOOL
NEWSLETTER OCTOBER 2025

SCHOOL NEWS



2025-2026

What a busy start to the new school year we've had. Everyone has come back with wonderful smiles and lot of happiness.

We've truly seen our intentions of Quality, Diversity, Faith and Flourishing being evident across the school.

With best wishes
Mrs Prichard

CONTACT US



029 2048 1608



stmarythevirginprm@cardiff.gov.uk



@SMTVCardiff



@smtvcardiff



www.stmarythevirginprm.co.uk



Estyn

We're looking forward to welcoming Estyn to inspect our school on Monday 3rd November.

A link to a Parent Survey will be sent via Schoop and Seesaw - please do complete it.

There will be a parent meeting at 3:30 p.m. on Monday 3rd November in the school hall. We hope as many of you will be able to come - all are welcome.

Understanding inspections in schools: A guide for parents and carers

Estyn is responsible for inspecting a wide range of education and training provision in Wales, and will soon be inspecting your child's school.

How do inspectors take account of my views of the school?

Estyn wants to know your views on the school. You can do this by:

- **completing an online questionnaire** via the direct link or QR code provided by the school. The questionnaire is the easiest way of making inspectors aware of your views.
- **attending a meeting with inspectors.** The school will inform you of the date and time.

How will an inspection benefit my child?

An inspection tells you about the quality of teaching and learning at your child's school. It gives the school an expert view on its work, outlining what it does well and helps it to improve.

Who inspects the school?

The inspection team is led by a Reporting Inspector who has considerable experience of teaching and education. Each inspection team also includes a lay inspector and a peer inspector. Lay inspectors have not worked as teachers in a school, while peer inspectors are headteachers or managers from another school. Each school may nominate one of their senior leaders to liaise directly with the inspection team and keep the inspectors informed about the school and its work.

How will the school be inspected?

Inspectors follow the guidance set out in these two documents: ['What we inspect'](#); ['How we inspect'](#)

How will inspectors take account of my child's view of the school?

During the inspection, inspectors will ask groups of children how they feel about the school, their work and how well they are getting on. All learners from Year 3 and above will have the opportunity to complete an online questionnaire before the inspection.

How will I know the inspectors' views on the school?

Inspection reports are published on the Estyn website 45 working days after the start of the inspection. The governing body will also send you details of the report.

What will be included within the report?

The report will have overall evaluations on:

- the quality of teaching and learning
- care, support and guidance, and pupils' well-being
- leadership and improvement

What happens after an inspection?

All schools must produce an action plan based on the recommendations in the inspection report.

The inspection team will consider and report whether the school requires any follow-up activity. The two types of follow-up activity are:

Special measures: this is the most intensive level of statutory follow-up. It involves a small team of Estyn inspectors making regular visits to review the school's progress following the publication of the inspection report

Significant improvement: involves a small team of Estyn inspectors visiting the school to monitor progress about 12-18 months after the publication of the inspection report

In addition to a core inspection, we will also undertake other engagements with schools and PRUs.

How can I contact Estyn?

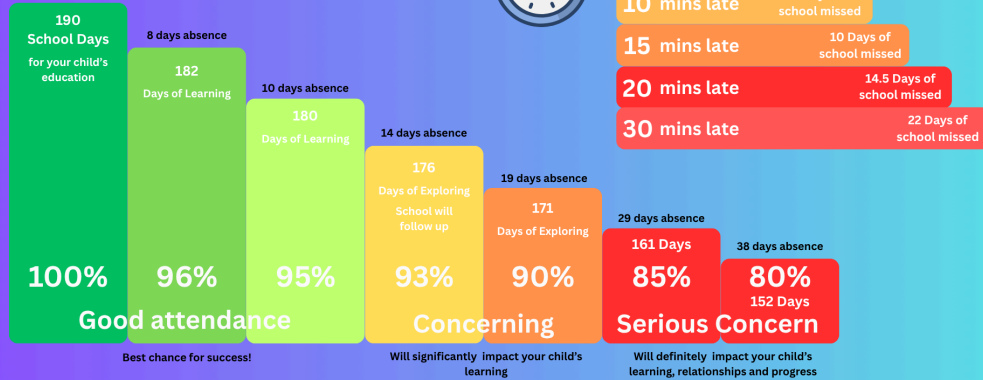
Email: ic@estyn.gov.wales

Tel: 02920 446446

Feedback about inspections:

feedback@estyn.gov.wales

Attendance Matters



SCHOOL ATTENDANCE

School attendance, and punctuality are really important.

We recognise that children get ill at times, however it is important that, if your child is absent, you let us know and give us the reason why. Please ring or Schoop us **before 9:00 a.m.** on the day of the absence.

If you do not contact us, and we are unable to contact you if your child is absent, we may need to contact Children's Services to confirm their safety.



The School Day

Nursery a.m.
9:00 a.m. - 11:30 a.m.

Nursery p.m.
12:45 p.m. - 3:15 p.m.

Reception - Year 6
8:55 a.m. - 3:15 p.m.

Please make every effort to be at school on time.

Attendance so far this Year

- Nursery a.m. 93.1%
- Nursery p.m. 83.5%
- Reception 89.8%
- Class 1 85.5%
- Class 2 92.8%
- Class 3 95.9%
- Class 4 89.0%
- Class 5 90.2%
- Class 6 88.1%

Overall 89.77%



Late Arrivals

- Nursery a.m.: 23
- Nursery p.m.: 31
- Reception: 21
- Class 1: 32
- Class 2: 29
- Class 3: 9
- Class 4: 44
- Class 5: 17
- Class 6: 14

Overall: 220



ST MARY THE VIRGIN CW PRIMARY SCHOOL

PLEASE MAKE A NOTE OF THESE TERM DATES



2025/6

SMTV holidays and INSETs

| | Begin | Half Term | | End | INSET DAYS |
|--------------------|-----------------------|-------------------------|-------------------------|-------------------------|---------------------------------------------------------------------------|
| | | Begin | End | | |
| Autumn 2025 | Monday September 2025 | Monday 27 October 2025 | Friday 31 October 2025 | Friday 19 December 2025 | 1 st and 2 nd September 24 th October |
| Spring 2026 | Monday 5 January 2026 | Monday 16 February 2026 | Friday 20 February 2026 | Friday 27 March 2026 | 5 th January 17 th July |
| Summer 2026 | Monday 13 April 2026 | Monday 25 May 2026 | Friday 29 May 2026 | Monday 20 July 2026 | 20 th July |

Fixed Penalty Notices

If your child has unauthorised absences for 10 sessions (5 days) or more, you may be issued with a Fixed Penalty Notice.

If your child has persistent absence, we may refer you to our School Attendance Officer to support you.

Holidays in term time are not authorised.

We want to support you with your child’s attendance and punctuality – please contact your child’s class teacher, Mrs Harris (Family Engagement Officer), or Mrs Prichard (Head teacher) if you are having problems or would like some support.

CARS ON NORTH CHURCH STREET

Please remember that North Church Street has no space for parking cars – there is free parking on Bute Street for up to 1 hour.

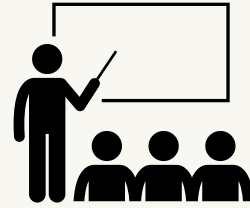
I have noticed an increasing number of cars being brought down North Church Street – **this is putting children at risk!**

There is plenty of parking available on Canal Parade.





OUR STAFF



School Leaders

Head teacher: Mrs Nicki Prichard

Deputy Head teacher: Mrs Bec Baston

Senior Leaders: Mrs Rhian Howe & Mrs Hannah Lakin

Office

Mrs Gemma Achilles (Senior Finance & Admin Officer)

Mrs Michaela Harris (Family Engagement Officer)

Lunchtime

School Cook: Mrs Jass Kaur

Kitchen Assistant: Miss Maria Mota

Estates

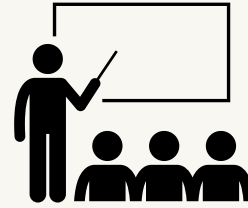
Estate Manager: Mr Tyrone Berry

Cleaners

APP Cleaning



OUR CLASSES



Nursery

Teacher: Miss Katie Thomas
LSAs: Miss Caitlin Doody, Miss Amal Mohamad

Reception

Teacher: Mrs Kate Parsons
LSA: Mrs Simran Kaur

Class 1

Teacher: Miss Rachel Goodwin
LSA: Miss Janine Wills

Class 2

Teacher: Mrs Lisa Davies
LSA: Miss Samina Ali

Class 3

Teacher: Mrs Rhian Howe
LSA: Miss Georgia Rankmore

Class 4

Teachers: Mrs Jo Webb (Mon-Wed), Mrs Susannah Thomas (Thurs-Fri)

Class 5

Teacher: Mr Chris Darlington
LSA: Miss Eman Mohamad (Tues - Fri)

Class 6

Teacher: Mrs Hannah Lakin

Nest

Teachers: Mrs Danielle Egan (Mon-Wed), Mrs Bec Baston (Thurs-Fri)
LSAs: Miss Seren Gallivan, Mrs Helen Watt

LSAs

ALN: Miss Sadaf Jafari
Intervention & Support: Ms Amina Aboussaad, Mrs Emma Phelps, Miss Clare Atkins

PPA cover provided by
Miss Clare Atkins (FPh) & Supply Cover (KS2)

FOOD & DRINKS

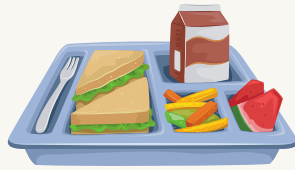
ST MARY THE VIRGIN CW
PRIMARY SCHOOL



School Meals



LUNCH TIME



School meals are now free for children from Reception to Year 6.

You **MUST** order your child's meal via ParentPay in advance - this can be done for up to 2 weeks in advance. If you have not ordered a lunch for your child, we will have to ring you to provide a packed lunch.

Packed Lunches



You may wish to provide a packed lunch for your child.

Please make sure this is a healthy lunch. Please don't send in fizzy drinks or sweets as part of the lunch.



We are a nut free school.

Cold takeaways (e.g. McDonald's, KFC) are not suitable.



If you bring a lunch for your child, please **DO NOT** bring any takeaway food.



Healthy Snack

Nursery & Reception: we provide a healthy snack for a cost of £1 each week. Please pay cash.

Years 1-6: please send your child with a healthy snack each day.



Your child needs to bring a reusable water bottle each day.

Thank you for not sending Stanley bottles.



School Uniform

We expect all children to wear School Uniform.

Our uniform is as follows:

- Black, grey or blue trousers, skirt or dress
- Polo shirt: white, blue or yellow
- Jumper/sweatshirt/cardigan: royal blue

We do not allow hoodies at school for uniform or PE kit.

Please make sure you put your child's name in their School Uniform - this is really important!

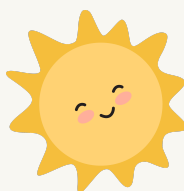


PE Kit

ALL children from Reception to Year 6 MUST bring a PE kit to school to change into: shorts, leggings or joggers, a T-shirt and trainers.

If your child does not bring kit, we will put them into spare school kit.

Please don't send your child to school in their PE kit.



Sunny & Hot weather

In hot weather, please make sure you send your child wearing sunscreen and a hat.

Sunglasses are not necessary - a hat is better.



Wet weather

When the weather changes, please make sure your child wears a suitable coat, with a hood if it's raining. We play outside in all sorts of weathers!

There's no such thing as bad weather, only unsuitable clothing! We have no room in school to store umbrellas.





ST MARY THE VIRGIN CW PRIMARY SCHOOL



PE Days

Please send your child to school with their PE kit on Mondays - they will take it home then on Fridays to be washed over the weekend!

Indoor PE:

Monday - Nursery, Class 3
Tuesday - Class 2 & Class 4
Wednesday - Class 6
Thursday - Class 1, Class 5
Friday - Reception

Outdoor PE:

Monday -
Tuesday - Reception, Class 1 & Class 5
Wednesday - Class 3
Thursday - Class 2, Class 4 & Class 6
Friday -



BREAKFAST CLUB



We have a small number of spaces in our Breakfast Club. Please contact the School Office for an application form.

Miss Maria Mota is our Breakfast Club Supervisor and Mrs Jass Kaur is her Assistant (as well as our School Cook)

Breakfast Club runs from 8:15 a.m. each morning and is free. Children MUST eat breakfast there - it is not childminding.

The gates close at 8:30 a.m. - your child will not be able to attend and will need to wait with you until 8:55 a.m.



School website

Our new school website should be launched within the next week or so ... keep your eye out for information on Schoop and Seesaw.

ARE YOU SIGNED UP FOR SCHOOP & SEESAW?



If you need any help, please come to the school office and speak to Mrs Harris or Mrs Baston.

