



ST MARY THE VIRGIN CW PRIMARY SCHOOL  
NEWSLETTER MARCH 2026

# SCHOOL NEWS



## SPRING TERM 2<sup>ND</sup> HALF

I hope you will find the information on this newsletter helpful. We've had a good start to Ramadan and Lent and Eid Mubarak wishes for Eid later in the half term. Thank you for your ongoing support. With best wishes  
Mrs Prichard

## CONTACT US



029 2048 1608



stmarythevirginprm@cardiff.gov.uk



@smtvcardiff

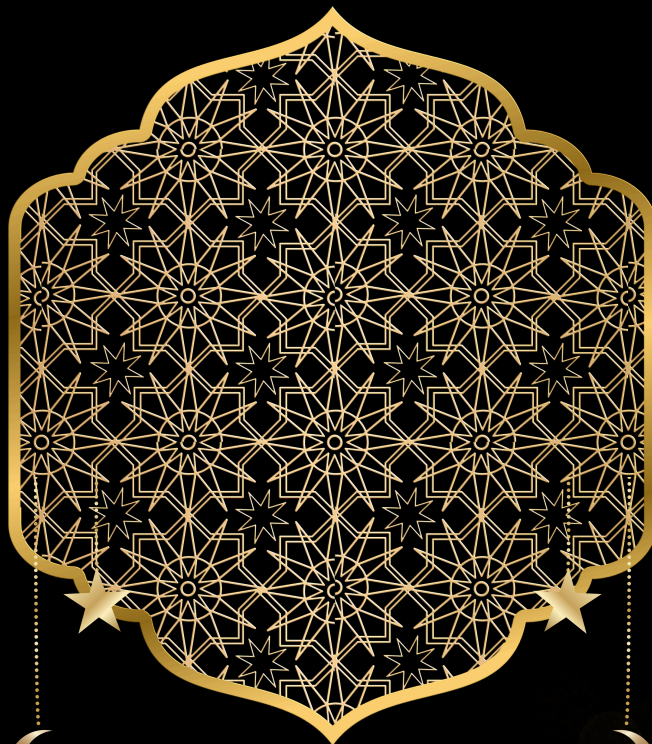


www.stmarythevirginprm.co.uk



## CALENDAR DATES

- Friday 27/02/26:** Whole School Eisteddfod  
**Thursday 05/03/26:** World Book Day (wear pyjamas & bring favourite book)  
**Monday 09/03/26 @ 2:00 p.m.:** Chaired Bard Ceremony. Year 6 parents invited to attend  
**Thursday 12/03/26:** Iftar after school - all welcome  
**Sunday 15/03/26:** Mothering Sunday  
**Monday 16/03/26 - Friday 27/03/26:** Big Walk & Wheel  
**Monday 23/03/26:** Eid Fashion Show  
**Tuesday 24/03/06:** Cook Stars Session 1/3  
**Wednesday 25/03/26:** Y5&6 Rugby Tournament  
**Thursday 26/03/26:** PS1 (Nursery & Reception) Easter Parades  
**Thursday 26/03/26:** Cluster Football Tournament  
**Friday 27/03/26:** Last day of Term  
**Monday 13/04/26:** Summer Term starts



We hope you and your  
family will join us

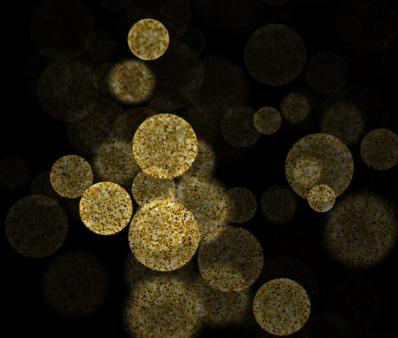
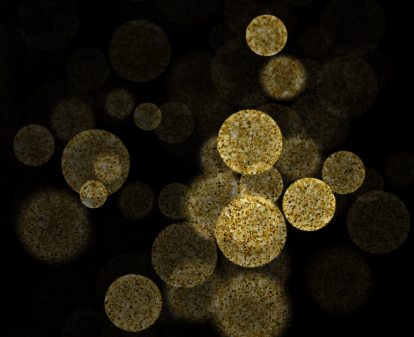
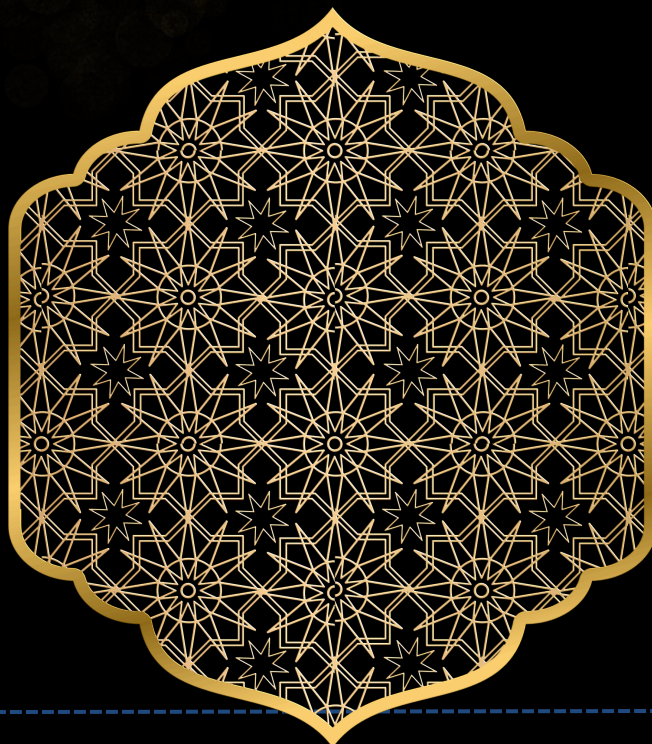
# RAMADAN

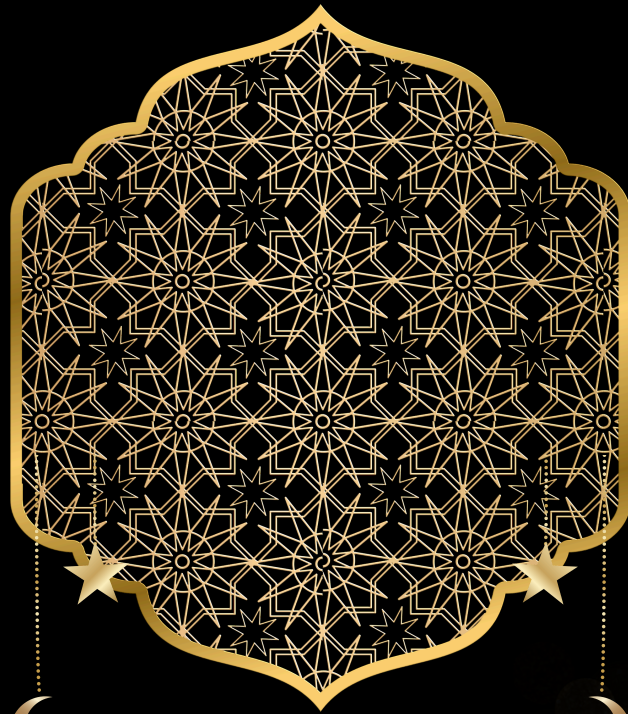
*Iftar*

At 5:45 p.m.

Thursday, 12th March 2026

St Mary the Virgin CW Primary  
School, North Church Street,  
Cardiff CF10 5HB





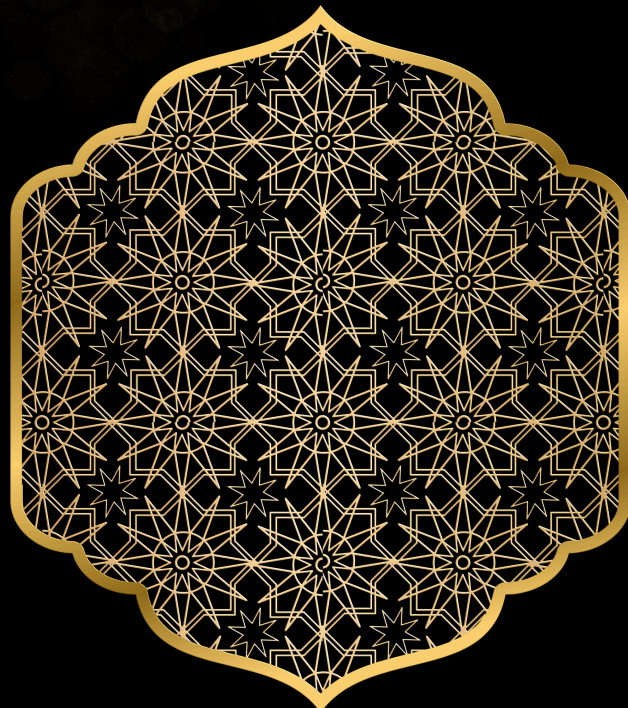
# RAMADAN

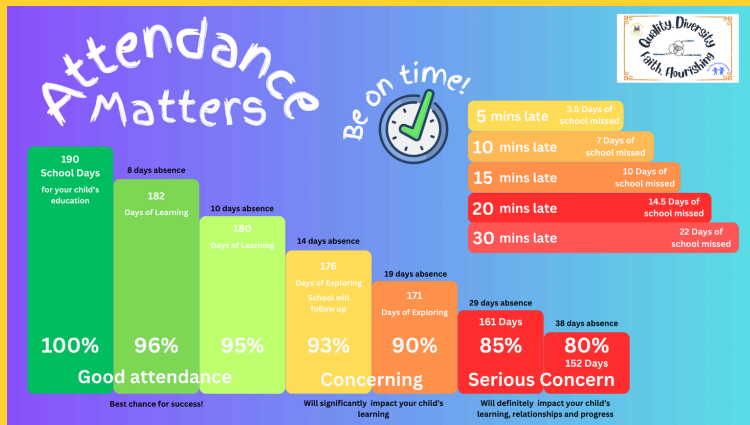
**Dates and water/fruit juice**

**Maghrib prayer**

**Iftar - please bring food to share**

**Iftar will end in time for you to go  
to Mosque for Isha prayer**





**The School Day**

**Nursery a.m.**  
9:00 a.m. - 11:30 a.m.

**Nursery p.m.**  
12:45 p.m. - 3:15 p.m.

**Reception - Year 6**  
8:55 a.m. - 3:15 p.m.

**Please make every effort to be at school on time.**

## SCHOOL ATTENDANCE

School attendance, and punctuality are really important.

We recognise that children get ill at times, however it is important that, if your child is absent, you let us know and give us the reason why. Please ring or Schoop us **before 9:00 a.m.** on the day of the absence.

If you do not contact us, and we are unable to contact you if your child is absent, we may need to contact Children's Services to confirm their safety.

As you can see from the information below:

- Our attendance percentages are improving, with 5 classes beating our target!
- However, too many children are arriving at school late - we have had the equivalent of at least 4 children late for school every day since September.
- I really need your help in improving this, especially afternoon Nursery. Session times are above. Please make every effort to be on time for school every day.

### Attendance so far this Year

Nursery a.m. 86.7%  
Nursery p.m. 85.9%  
Reception 91.6%  
Class 1 92.9%  
Class 2 94.0%  
Class 3 93.5%  
Class 4 95.5%  
Class 5 94.0%  
Class 6 94.9%

**Overall 91.4%**



### Late Arrivals

Nursery a.m.: 61  
Nursery p.m.: 71  
Reception: 60  
Class 1: 65  
Class 2: 50  
Class 3: 32  
Class 4: 59  
Class 5: 27  
Class 6: 34

**Overall: 459**



ST MARY THE VIRGIN CW PRIMARY SCHOOL

# PLEASE MAKE A NOTE OF THESE TERM DATES



**2025/6**

SMTV holidays and INSETs

	Begin	Half Term		End	INSET DAYS
		Begin	End		
<b>Autumn 2025</b>	Monday September 2025	Monday 27 October 2025	Friday 31 October 2025	Friday 19 December 2025	1 <sup>st</sup> and 2 <sup>nd</sup> September 24 <sup>th</sup> October 5 <sup>th</sup> January 17 <sup>th</sup> July 20 <sup>th</sup> July
<b>Spring 2026</b>	Monday 5 January 2026	Monday 16 February 2026	Friday 20 February 2026	Friday 27 March 2026	
<b>Summer 2026</b>	Monday 13 April 2026	Monday 25 May 2026	Friday 29 May 2026	Monday 20 July 2026	

## CARS ON NORTH CHURCH STREET

Please remember that North Church Street has no space for parking cars - there is free parking on Bute Street for up to 1 hour.

I have noticed an increasing number of cars being brought down North Church Street - **this is putting children at risk!**

**There is plenty of parking available on Canal Parade.**



## ACTIVE TRAVEL

We are very grateful to the local authority for installing a Bike Shelter and Scooter Storage for us.

You will notice that as scooters are weatherproof and don't have seats, the scooter storage is the same as in other schools, i.e. with no roof.

It's lovely to see children using their bikes and scooters each day.





## ST MARY THE VIRGIN CW PRIMARY SCHOOL



# PE Days



Reminder: please send your child to school with their PE kit on Mondays - they will take it home then on Fridays to be washed over the weekend!

**Spare kit will be expected to be worn if children don't bring their kit.**

### Indoor PE:

Monday - Nursery, Class 3  
Tuesday - Class 2 & Class 4, Class 5  
Wednesday - Class 6  
Thursday - Class 1  
Friday - Reception

### Outdoor PE:

Monday  
Tuesday - Reception, Class 1 & Class 5  
Wednesday - Class 3  
Thursday - Class 2, Class 4, Class 5 & Class 6  
Friday -

# BREAKFAST CLUB



We have a small number of spaces in our Breakfast Club. Please contact the School Office for an application form.

Miss Maria Mota is our Breakfast Club Supervisor and Mrs Jass Kaur is her Assistant (as well as our School Cook)

Breakfast Club runs from 8:15 a.m. each morning and is free. Children MUST eat breakfast there - it is not childminding.

The gates close at 8:30 a.m. - your child will not be able to attend and will need to wait with you until 8:55 a.m.

## School website

[www.stmarythevirginprm.co.uk](http://www.stmarythevirginprm.co.uk)

Our school website includes a calendar section so that you know about events in advance.

We will continue to send School reminders closer to these days.

## ARE YOU SIGNED UP FOR SCHOOP & SEESAW?



If you need any help, please come to the school office and speak to Mrs Harris or Mrs Lakin

