



ST MARY THE VIRGIN CW PRIMARY SCHOOL  
NEWSLETTER MAY 2026

# SCHOOL NEWS



## SUMMER TERM 1<sup>ST</sup> HALF

I hope you will find the information on this newsletter helpful.

What a busy start we've had to the summer term! Thank you for your ongoing support.

With best wishes

Mrs Prichard

## CONTACT US



029 2048 1608



stmarythevirginprm@cardiff.gov.uk



@smtvcardiff



www.stmarythevirginprm.co.uk

thank  
you



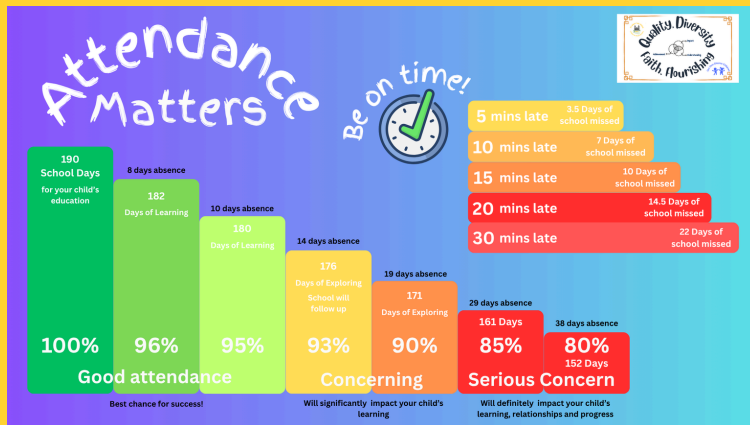
Miss Wills will be leaving us on Friday 15<sup>th</sup> May to start a new job.

She has worked at St Mary's since 2008 and has had a wonderful impact on so many children, staff and families.

We wish her every success in her new job - they are very lucky to have her.

Pwb lwc, Miss Wills - we'll miss you.

THANK YOU



**The School Day**

**Nursery a.m.**  
9:00 a.m. - 11:30 a.m.

**Nursery p.m.**  
12:45 p.m. - 3:15 p.m.

**Reception - Year 6**  
8:55 a.m. - 3:15 p.m.

**Please make every effort to be at school on time.**

## SCHOOL ATTENDANCE

School attendance, and punctuality remain really important. We recognise that children get ill at times, however it is important that, if your child is absent, you let us know and give us the reason why. Please ring or Schoop us **before 9:00 a.m.** on the day of the absence. If you do not contact us, and we are unable to contact you if your child is absent, we may need to contact Children's Services to confirm their safety. As you can see from the information below the number of pupils arriving at school late is a real concern. Please make sure you arrive at school on time so your child has the very best start to the day.

### Attendance so far this Year

- Nursery a.m. 86.6%
- Nursery p.m. 83.7%
- Reception 92.2%
- Class 1 92.6%
- Class 2 92.8%
- Class 3 93.0%
- Class 4 95.5%
- Class 5 93.5%
- Class 6 94.2%

**Overall 91.3%**



### Late Arrivals

- Nursery a.m.: 122
- Nursery p.m.: 184
- Reception: 131
- Class 1: 163
- Class 2: 120
- Class 3: 80
- Class 4: 121
- Class 5: 73
- Class 6: 79

**Overall: 1,073**



# PLEASE MAKE A NOTE OF THESE TERM DATES

<b>2025/6</b>				
<b>SMTV holidays and INSETs</b>				
	<b>Begin</b>	<b>Half Term</b>		<b>End</b>
		<b>Begin</b>	<b>End</b>	
<b>Autumn 2025</b>	Monday September 2025	Monday 27 October 2025	Friday 31 October 2025	Friday 19 December 2025
<b>Spring 2026</b>	Monday 5 January 2026	Monday 16 February 2026	Friday 20 February 2026	Friday 27 March 2026
<b>Summer 2026</b>	Monday 13 April 2026	Monday 25 May 2026	Friday 29 May 2026	Monday 20 July 2026

<b>INSET DAYS</b>
1 <sup>st</sup> and 2 <sup>nd</sup> September
24 <sup>th</sup> October
5 <sup>th</sup> January
17 <sup>th</sup> July
20 <sup>th</sup> July

## CARS ON NORTH CHURCH STREET

Thank you so much for not driving down and parking on North Church Street. It does make everything much safer for the children and families at St Mary's.





## ST MARY THE VIRGIN CW PRIMARY SCHOOL



# PE Days



Reminder: please send your child to school with their PE kit on Mondays - they will take it home then on Fridays to be washed over the weekend!

**Spare kit will be expected to be worn if children don't bring their kit.**

### Indoor PE:

Monday - Nursery, Class 3  
Tuesday - Class 2 & Class 4, Class 5  
Wednesday - Class 6  
Thursday - Class 1  
Friday - Reception

### Outdoor PE:

Monday  
Tuesday - Reception, Class 1 & Class 5  
Wednesday - Class 3  
Thursday - Class 2, Class 4, Class 5 & Class 6  
Friday -

# BREAKFAST CLUB



We have a small number of spaces in our Breakfast Club. Please contact the School Office for an application form.

Miss Maria Mota is our Breakfast Club Supervisor and Mrs Jass Kaur is her Assistant (as well as our School Cook)

Breakfast Club runs from 8:15 a.m. each morning and is free. Children MUST eat breakfast there - it is not childminding.

The gates close at 8:30 a.m. - your child will not be able to attend and will need to wait with you until 8:55 a.m.

## School website

[www.stmarythevirginprm.co.uk](http://www.stmarythevirginprm.co.uk)

Our school website includes a calendar section so that you know about events in advance.

We will continue to send School reminders closer to these days.

## ARE YOU SIGNED UP FOR SCHOOP & SEESAW?



If you need any help, please come to the school office and speak to Mrs Harris or Mrs Lakin

